

TECHSiL



WHAT CAN WE **GLUE** FOR YOU?

WHAT CAN WE **GLUE** FOR YOU?



Packaging

Carton sealing • Packaging sub-assemblies
Contract packaging • Waxed & coated boards
Moisture barrier attachment
Fine art packaging (acid free)
Protective foams



Product assembly

Tile displays • Automotive trim
Badges & emblems • Plastic assembly
Sand core assembly • Luggage assembly
Fabrics and foams • Magazine tip-ins
Sample books



Woodwork

Upholstered furniture
Clamping, positioning & templates
Fabric bonding • Corner spacer blocks
Drawer bottom reinforcement
V-groove assembly • Knot filling
Picture framing • Securing mirrors to frames



Flooring

Gripper attachment • Carpet repairs
Stair nosing • Laminate beading attachment
Stair carpet bonding • Under-floor heating
Wood floor repairs & gap filling



Electrical

Component stabilisation
Attaching components to PC boards
Potting • Coil terminating • Wire staking
Vibration protection • Strain relief of cables
Fixing & securing battery packs
Telephone & data cable installation
Low pressure over-moulding



Floristry

Floristry foam • Flower arranging
Gift card attachment • General assembly
Balloons (using lowmelt adhesive only)
Banners • Ribbon • Rosettes



Point of sale

Laminated and coated boards
Plastic trim attachment • Reinforcement



Arts & crafts

Card making • Wooden models • Rosettes
Promotional items • Novelty crackers
Colour & glitter glues for decoration
Party hats



Confused about what equipment you need?
There's a lot to choose from! But we recommend selecting the correct adhesive for your application first. This will make it easier to choose suitable tools and accessories.

(High output tools are available for large displays)

tecbond® adhesives

tecbond® hot melt adhesives provide instant, permanent bonding on a vast range of materials without the use of harmful solvents. They are ideal for fast repetitive gluing applications.

tecbond® hot melts are available in stick, cartridge and bulk forms. They can be used in tools ranging from the smallest hand guns to fully automatic bulk tank systems. Once loaded the solid adhesive is melted by the applicator and then applied to the surface being bonded.

Most materials can be bonded with hot melt adhesives providing the parts can be assembled while the adhesive is still molten. The molten adhesive is applied to one of the surfaces to be bonded. When the parts are pressed together the heat quickly dissipates into the substrates, which solidifies the adhesive, and a bond or seal is made instantly.

Working times of our hotmelts vary from just a few seconds to several minutes: the actual time will depend on adhesive formulation, ambient temperature, substrate temperature, and the amount and configuration of the adhesive applied.

tecbond® hot melts are 100% solid, non-toxic adhesives containing no solvents (no VOCs) or water. Users do not have to worry about odours or mould in finished products, or about paying for a solvent that just evaporates. tecbond® hot melt adhesives are safe and easy to store, and have a virtually unlimited shelf life.

tec™ glue guns

tec™ glue guns are designed to apply our wide range of tecbond® hot melt adhesives, easily, quickly and reliably. They are low-cost capital items, highly portable and designed to be totally reliable in tough industrial environments.

tec™ glue guns can apply hot melt adhesive in bead, dot and even spray patterns, depending on the model selected.

The wattage of the tool normally determines the melt-rate. Tool selection should be based on the amount of adhesive required per assembly, as well as the number of assemblies needed to be produced per hour.

In general the larger tools are more powerful and are capable of providing greater volumes of hot melt adhesive, at the correct temperature, for optimum bonding.



Do you have a question about any products within the tec or tecbond range? Just give our sales team a call - they'll be happy to advise you. Find our contact details on the back page.

contents

12mm (½") tec™ glue guns	4 - 5
12mm (½") cordless tec™ glue guns	6 - 7
12mm (½") tecbond® glue sticks	8 - 9
15mm (⅝") tec™ glue guns & tecbond® glue sticks	10 - 11
43mm (1¾") tec™ glue guns & tecbond® cartridges	12 - 13
43mm (1¾") spraytec glue guns & spray adhesives	14 - 15
Bulk & pressure sensitive tecbond® adhesives	16
tec™ 4500 pneumatic reservoir guns & workstation	17
Nozzles & packaging with hot melts	18 - 19
Woodworking with hot melts, thermostats & gun stands	20 - 21
Accessories	22 - 23



12mm (1/2") tec hot melt glue guns



tec 305-12

Light industrial 12mm (1/2") glue gun, lightweight and easy to use, illuminated on/off switch, removable stand, adjustable full hand trigger and replaceable nozzle.



Melt rate	900g (2lbs)/hr
Glue size	12mm (1/2") glue stick
Voltage	110-240V
Wattage	20W (150W)
Heater	PTC
Temp Control	Self-regulating heater
Hotmelt gun °C (°F)	195°C (380°F)
Lowmelt gun °C (°F)	130°C (265°F)
Power cable	2m (6 1/2 ft)
Weight	250g (9oz)
Packaging	PET blister (10 per ctn)



tec 810-12

Heavy duty medium size 12mm (1/2") glue gun, robust & easy to use with medium output, 2 minute warm-up time, fast recovery & illuminated on/off switch.



Melt rate	2.0kg (4 1/2 lbs)/hr
Glue size	12mm (1/2") glue stick
Voltage	120V and 230V
Wattage	250W
Heater	Cartridge
Temp Control	Interchangeable thermostat
Hotmelt gun °C (°F)	195°C (380°F)
Lowmelt gun °C (°F)	130°C (265°F)
Power cable	3m (10 ft)
Weight	500g (18oz)
Packaging	Plain box (10 per ctn)

Don't forget!
12mm (1/2") glue sticks are on page 8.

Scan for the 12mm gun video!



tec 820-12

Adjustable temperature, heavy duty medium size 12mm (1/2") glue gun. Robust and easy to use, fast recovery, medium output, 2 minute warm up time & illuminated on/off switch.



Melt rate	2.5kg (5 1/2 lbs)/hr
Glue size	12mm (1/2") glue stick
Voltage	120V and 230V
Wattage	250W
Heater	Cartridge
Temp Control	User adjustable thermostat
Hotmelt gun °C (°F)	Adjustable 130-200°C (265-390°F)
Lowmelt gun °C (°F)	Covered above
Power cable	3m (10 ft)
Weight	500g (18oz)
Packaging	Plain box (10 per ctn)

Don't forget!
You can find more information on the tec 820 tool on page 11.

12mm (1/2") tec hot melt glue guns

Introducing our new high-quality, low-cost, economy 12mm glue gun

Improved quality, same low cost


Introducing the tec 806-12, the brand new replacement for the low cost 805-12 glue gun. The tec 806-12 combines high quality and cost efficiency with a new and improved lightweight, economic design - all for the same low price. It's improved features include a new soft-feel handle, making it a much more comfortable gun to use. Plus, the 2m cordset of the 805-12 is now replaced with a longer, 3m cordset for improved reach when working. This updated design also incorporates a new heater housing, which heats the glue more evenly before feeding it straight through the gun, resulting in a smoother application.

Even easier to use

With an improved mechanism, the tec 806 is easier to use for longer, and has been designed to ensure optimum user-comfort with a new soft-feel grip. It also features an adjustable trigger, which means that alterations can be made to suit different hand sizes, or to achieve different outputs per trigger pull. It also includes a sturdy base, so it can be stood up between uses with no risk of the glue melting back. Plus, the 806 has been modelled with a narrow profile to aid visibility and ensure that adhesive can be accurately applied. It also has an easy-to-clean nose, so any dried glue can be wiped off to keep your gun in good condition.

Fast warm-up

The tec 806-12 has a fast heat up time of only 2-3 minutes from cold, so is ready for use almost immediately. It is fitted with an illuminated on/off switch, which now features a new moulding to shield it, preventing it from being turned on or off by accident. The tec 806-12 can also operate on any voltage from 110V to 240V due to its PTC self-regulating heater, offering users even more flexibility.

 Scan for the tec 806 video!



The soft-grip handle and new heater housing make the tec 806 comfortable to use and smooth to operate

new

The illuminated on/off switch now features a new moulding to shield it, preventing it from being turned on or off by accident

tec 806-12

Low cost medium size industrial 12mm (1/2") glue gun, eco heater chamber design for low power consumption, robust & easy to use. Medium output, 3 minute warm-up time & illuminated on/off switch.

Melt rate	1.8kg (4lbs)/hr
Glue size	12mm (1/2") glue stick
Voltage	110-240V
Wattage	25W (250W)
Heater	PTC
Temp Control	Self-regulating heater
Hotmelt gun °C (°F)	195°C (380°F)
Lowmelt gun °C (°F)	n/a
Power cable	3m (10 ft)
Weight	450g (16oz)
Packaging	PET blister (10 per ctn)

! Don't forget!
The tec 805-12 is still available as a low-temperature option (130°C, 265°F)

Ideal for... a range of industrial applications, from crafting and floristry through to woodworking and product assembly



1 *Woodworking*

The tec 806-12 can be used for a range of woodworking applications, with a good output and smooth operation.



2 *Product assembly*

It is ideal for product assembly too, and the slim profile of the 806 means that the adhesive can be accurately applied.



3 *Packaging*

Robust and reliable, the tec 806 is also ideal for a range of carton closing and packaging applications.

Did you know? Over 90% of our products are manufactured in the UK.

12mm (1/2") cordless tec glue guns



new

Takes the full range of tecbond 12mm (1/2") glue sticks

Narrow profile and extension nozzle fitted as standard to aid accurate glue placement

Adjustable full-hand lever trigger and soft-feel grip handle for user comfort

Illuminated on/off switch

Designed to use the widely available RYOBI® 18V 1.5Ah lithium+ battery system, which achieves recharge times of approx 60 mins

Don't forget! The b-tec 807 can be purchased alone (with or without a case), or as part of a kit. Spare charger and battery sets are also available.


Battery powered glue gun

b-tec-807-KIT

The battery loads easily, and features a meter to show how much charge is remaining.

Completely portable, robust 12mm (1/2") glue gun that runs on battery power. Easy and comfortable to use, with medium output, 3 minute warm-up time & illuminated on/off switch. Comes complete with battery, charger and carry case.

 [Learn more! Scan for video](#)



Melt rate	1.9kg (4lbs)/hr
Glue size	12mm (1/2") glue stick
Voltage	18V
Wattage	20W (150W)
Heater	PTC
Temp Control	Self-regulating heater
Hotmelt gun °C (°F)	195°C (380°F)
Lowmelt gun °C (°F)	n/a
Power cable	Cordless
Weight	Tool only: 530g (1.2 lbs), tool fitted with battery: 980g (2.2lbs)
Packaging	Kits: individually boxed, gun only: plain box (10 per ctn)



Supplied as a blister pack with 2 LEC™ cartridges

Cooler top mounted exhaust for improved safety

Improved ventilation

Takes standard tecbond 12mm (1/2") glue sticks

Gas on/off wheel and piezo ignition button

Full-hand soft-feel trigger & handle

Fitted with silicon rubber nozzle shroud for extra safety

Flip up stand

On indicator light


12mm (1/2") precision extension nozzle fitted as standard


Exclusive LEC™ technology

gas-tec 600

Refilling is fast and simple using standard cigarette lighter canisters.

The gas-tec 600 is a totally portable, robust compact hot melt glue gun that runs on butane gas. It does not require mains electricity or batteries but operates using easily refillable LEC™ (Liquid Energy Cells) power technology. The gas-tec 600 has been built to a very high standard and incorporates a soft-feel handle and full-hand trigger, making it a very comfortable gun to use.

 [Learn more! Scan for video](#)



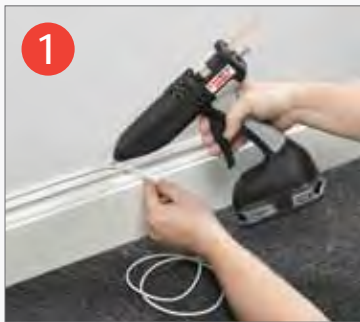
Melt rate	1.7kg (3.7lbs)/hr
Glue size	12mm (1/2") glue stick
Voltage	Gas powered
Wattage	185W (equivalent)
Heater	Catalytic
Temp Control	Thermostatic gas valve
Hotmelt gun °C (°F)	195°C (380°F)
Lowmelt gun °C (°F)	n/a
Power cable	Cordless
Weight	390g (14oz)
Packaging	PET blister (10 per ctn)

No mains electricity supply? No problem.

The cordless tec range of guns gives you the freedom to work virtually anywhere as there are no power cables and no need for an electrical power source. Both guns are easy to use and offer great accessibility, making them ideal for trickier applications.



Ideal for... awkward applications where a mains power source isn't readily available



Attaching cables

The portability and independent power source of the cordless guns make them ideal for applications like attaching low-voltage cables.



Dent repair

Both cordless guns can also be used as part of a paint-less dent repair system that, used together with the rest of the kit, can remove dents from cars.



Flooring

Great for applications where freedom of movement is important, the cordless tec glue guns are perfect for jobs like laying gripper rods and repairing wooden floors.



Securing devices

Neither cordless tec glue gun needs to be plugged in, which means they can also be used at height to attach devices such as PIRs.

12mm (1/2") tecbond glue sticks

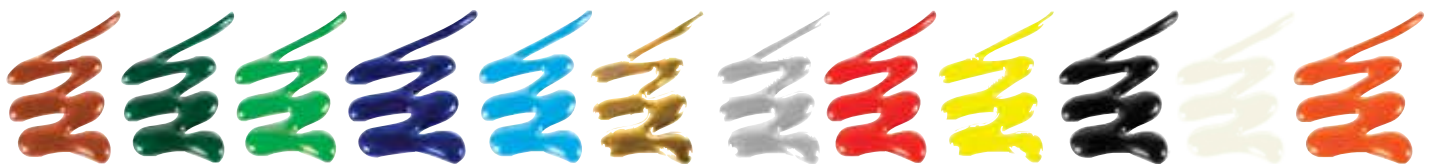


Unsure?



Unsure which adhesive formulation is the best match for your application? Just give our sales team a call - they'll be happy to advise you. Find our contact details on the back page.

Formulation	Description	Colour	Open time	Viscosity
14	High delivery, very fast setting packaging adhesive	Pale amber	Short	Low
1942	Product assembly adhesive for wood and many plastics, nylon, ABS & rigid PVC	Amber	Long	Medium
1X	Medium viscosity, wood working and packaging adhesive. Medium open time	Light brown	Medium	Medium
213	Economical, general purpose adhesive. Suitable for ceramics, rigid PVC & polystyrene	Pale amber	Long	High
214	Economical, fast setting, packaging adhesive	Pale amber	Short	Medium
23	Medium viscosity multi-purpose adhesive. For fabric, hard & soft wood & many plastics	Pale amber	Long	Medium
232	Economical, high viscosity, clear general purpose adhesive. Suitable for fabrics, wood, card, and some plastics	Clear	Medium	High
240	Multi-temp, long open time, multi-purpose, clear adhesive. For use with many plastics & light gauge metals	Clear & colours	Long	Medium
246	High performance adhesive for painted, varnished and other smooth surfaces	Clear & black	Medium	High
248	Very high performance, acrylic based hotmelt. Excellent adhesion to smooth and shiny surfaces	Clear	Long	Medium
260	High performance, long open time, tough, flexible adhesive. Suitable for ceramics, plastics & woods	Light brown	Long	Medium
261	High performance, tough, flexible adhesive with long open time. For use with ceramics, plastics incl PP/PE & woods	Pale amber	Long	Low
263	Polypropylene bonding with high heat resistance	Light brown	Long	High
341	Medium viscosity, fast setting, white adhesive with instant grab, suitable for packaging and woodworking applications	White	Short	Medium
342	High viscosity, fast setting, white adhesive with instant grab. Suitable for heavy duty carton board & cable attachment	White	Very short	High
5	High delivery, low viscosity, long open time, product assembly adhesive. For wood, plastic & metals	Light brown	Long	Low
LM44	Lowmelt, fast setting, high performance, white adhesive. Ideal for expanded polystyrene, thin films & balloons	White	Short	Low
Polyamide adhesives				
7713	Economy general purpose polyamide with high and low temperature resistance, and good chemical resistance	Amber & black	Medium	Medium
7718FR	Low viscosity fire retardant polyamide for potting and encapsulating applications in the electronics industry	Amber & black	Short	Low
7784	High performance polyamide for bonding to difficult surfaces. Excellent high and low temperature resistance and good chemical resistance	Amber	Medium	Medium
7785	Very high temperature and chemical resistance, suitable for demanding filter and automotive applications	Amber	Medium	Medium
7786FR	Very high temperature fire retardant polyamide adhesive for product assembly applications in the electronics industry	Amber	Medium	Medium



Formulation	Description	Colour	Open time	Viscosity
240 Coloured	Economical, medium viscosity, general purpose adhesive. Suitable for glass, fabrics, wood, card, and some plastics	12 colours	Long	Medium

Don't forget!



The Glue Saver (ref. TEC-GS12) lets you change the colour of your glue stick, with no waste.

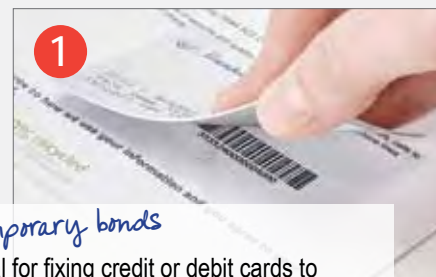


Formulation	Description	Colour	Open time	Viscosity
240 Glitter	Economical, medium viscosity, general purpose adhesive. Suitable for glass, fabrics, wood, card, and some plastics	5 colours	Long	Medium

Ideal for... creating temporary bonds that can easily be peeled apart



Learn more!
Scan for video



Temporary bonds

Ideal for fixing credit or debit cards to letters, which can then be easily peeled off.



Giveaways

Peeltec 210 is perfect for attaching objects to magazines or catalogues for giveaways.



Glue dots

Create simple glue dots with a 12mm glue gun, without the need for a specialist dispenser.

peeltec 210

A peelable - or fugitive - glue, Peeltec 210 can be removed easily once dry without any residual tack or residue. When applied sparingly it won't damage either surface, making it ideal for creating temporary bonds. It can be used on many different materials, including plastics and a range of paper types and board - with various print finishes and varnishes.

Open time	Very short
Molten tack	Medium
Heat resistance	120°C (248°F)
Low temperature flexibility	-30°C (-22°F)
Glue size	12mm (1/2")
Colour	Off white

tecbond 239

Tecbond 239 is based on a more flexible, clearer polymer, that has been carefully matched with the other components to maintain the maximum clarity possible.

Open time	Medium
Molten tack	Medium
Heat resistance	70°C (158°F)
Low temperature flexibility	-30°C (-22°F)
Glue size	12mm (1/2"), 15mm (5/8")
Colour	Crystal clear



Ideal for... gap filling, and use on porous fabrics & foams



Crafting & floristry

Tecbond 239 is ideal for use on porous fabrics and foams like those used in crafting and floristry.



Decoration & gap filling

Its high viscosity and ultra-clear appearance also make it ideal for decorating with things like air plants, filling gaps and adding stability.

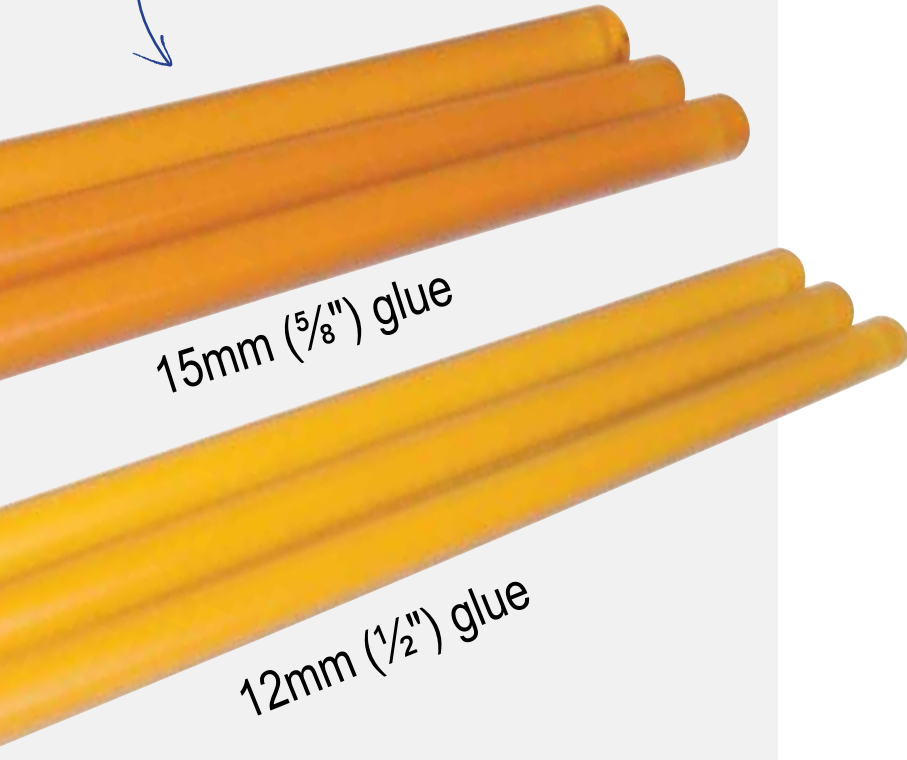


Packaging

Because it's so clear, tecbond 239 can be used with clear packaging materials to great effect.

15mm (5/8") tecbond glue sticks

Get even more glue per trigger pull with 15mm (5/8") glue



Increased output

With 30% more molten glue per trigger pull, you can up your productivity just by using 15mm (5/8") adhesive.

Less downtime

Tec 15mm (5/8") glue guns hold up to 60% more glue when compared with their 12mm (1/2") counterparts, so they don't need to be reloaded as often. Plus, all 15mm (5/8") tools have highly efficient melt chambers which see them heat up in only 2-3 minutes.

Same easy application

All of these benefits with the same tecbond quality that you'd expect. Instant, permanent bonding on a wide range of materials, and no harmful solvents. Still safe and easy to store with a virtually unlimited shelf life.

And the 15mm (5/8") glue sticks are just as easy to load into our tec 15mm (5/8") glue guns. With a narrow profile for improved visibility, and an extension nozzle fitted as standard, accurate glue placement has never been easier.

Still unsure?



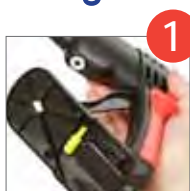
Unsure which adhesive formulation is the best match for your application? Just give our sales team a call - they'll be happy to advise you. Find our contact details on the back page.



tecbond high performance 15mm (5/8") glue sticks

Formulation	Description	Colour	Open time	Viscosity
14	High delivery, very fast setting packaging adhesive	Pale amber	Short	Low
213	Economical, general purpose adhesive. Suitable for ceramics, rigid PVC & polystyrene	Pale amber	Long	High
214	Economical, fast setting, packaging adhesive	Pale amber	Short	Medium
23	Medium viscosity multi-purpose adhesive. For fabric, hard & soft wood & many plastics	Pale amber	Long	Medium
232	Economical, high viscosity, clear general purpose adhesive. Suitable for fabrics, wood, card, and some plastics	Clear	Medium	High
240	Multi-temp, long open time, multi-purpose, clear adhesive. For use with many plastics & light gauge metals	Clear	Long	Medium
248	Very high performance, acrylic based hotmelt. Excellent adhesion to smooth and shiny surfaces	Clear	Long	Medium
260	High performance, long open time, tough, flexible adhesive. Suitable for ceramics, plastics & woods	Light brown	Long	Medium
261	High performance, tough, flexible adhesive with long open time. For use with ceramics, plastics incl PP/PE & woods	Pale amber	Long	Low
LM44	Lowmelt, fast setting, high performance, white adhesive. Ideal for expanded polystyrene, thin films & balloons	White	Short	Low
Polyamide adhesive				
7718FR	Low viscosity fire retardant polyamide for potting and encapsulating applications in the electronics industry	Amber	Short	Low
7784	High performance polyamide for bonding to difficult surfaces. Excellent high and low temperature resistance and good chemical resistance	Amber	Medium	Medium
7785	Very high temperature and chemical resistance, suitable for demanding filter and automotive applications	Amber	Medium	Medium

Adjustable temperature control



1 The thermostat adjustment tool is stored under the gun's stand



2 Insert into the thermostat adjustment screw on the underside of the gun. Turning the screw fully anti-clockwise reduces the temperature to 130°C, while turning it fully clockwise increases it to 200°C

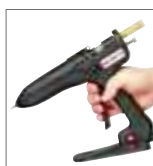
tec 820-15

Adjustable temperature, heavy duty medium size 15mm (5/8") glue gun. Robust and easy to use, fast recovery, medium output, 2 minute warm-up time & illuminated on/off switch.

Melt rate	2.5kg (5½lbs)/hr
Glue size	15mm (5/8") glue stick
Voltage	120V and 230V
Wattage	300W
Heater	Cartridge
Temp Control	User adjustable thermostat
Hotmelt gun °C (°F)	Adjustable 130-200°C (265-390°F)
Lowmelt gun °C (°F)	Covered above
Power cable	3m (10 ft)
Weight	500g (18oz)
Packaging	Plain box (10 per ctn)



tec 805-15



Professional, low cost



Low cost medium size industrial 15mm (5/8") glue gun, eco heater chamber design for low power consumption, robust & easy to use. Medium output, 3 minute warm-up time & illuminated on/off switch.

Melt rate	1.8kg (4lbs)/hr
Glue size	15mm (5/8") glue stick
Voltage	110V - 240V
Wattage	30W (250W)
Heater	PTC
Temp Control	Self-regulating heater
Hotmelt gun °C (°F)	195°C (380°F)
Lowmelt gun °C (°F)	130°C (265°F)
Power cable	2m (6½ ft)
Weight	450g (16oz)
Packaging	PET blister (10 per ctn)

tec 810-15



Continuous industrial use



Heavy duty medium size 15mm (5/8") glue gun, robust & easy to use with medium output, 2 minute warm up time, fast recovery & illuminated on/off switch.

Melt rate	2.0kg (4½lbs)/hr
Glue size	15mm (5/8") glue stick
Voltage	120V and 230V
Wattage	300W
Heater	Cartridge
Temp Control	Interchangeable thermostat
Hotmelt gun °C (°F)	195°C (380°F)
Lowmelt gun °C (°F)	130°C (265°F)
Power cable	3m (10 ft)
Weight	500g (18oz)
Packaging	Plain box (10 per ctn)

43mm (1¾") tec glue guns

All-electric
bead gun



tec
3150

High output 43mm (1¾") glue gun for industrial use. All-electric & extremely robust. Power-on light with removable integral stand with built in nozzle spanner.

Melt rate	3kg (6½ lbs)/hr
Glue size	43mm (1¾") glue cartridge
Voltage	120V and 230V
Wattage	300W
Heater	Cartridge
Temp Control	Interchangeable thermostat
Hotmelt gun °C (°F)	195°C (380°F)
Lowmelt gun °C (°F)	130°C (265°F)
Power cable	3m (10 ft)
Weight	1.15kg (2½lbs)
Packaging	Plain box (5 per ctn)

Pneumatic
bead gun



tec
6100

Extremely robust 43mm (1¾") pneumatic glue gun for industrial use. Reduces operator fatigue, power-on light, 7 bar (100psi) 14 l/min (0.5 cfm) air supply required.

Melt rate	4.1kg (9lbs)/hr
Glue size	43mm (1¾") glue cartridge
Voltage	120V and 230V
Wattage	500W
Heater	Cartridge
Temp Control	Interchangeable thermostat (Contact distributor)
Hotmelt gun °C (°F)	195°C (380°F) High temp polyamide version 215°C (420°F)
Lowmelt gun °C (°F)	130°C (265°F)
Power cable	3m (10 ft)
Weight	1.4kg (3lbs)
Packaging	Plain box (5 per ctn)

Don't forget!



You'll need to use an air compressor with the tec 6100 & tec 7100. You can find the tec-AIR 50TDC on page 22.

Pneumatic
bead gun



Speedloader
to reduce
down time!

tec
7100

Extremely robust, very high output 43mm (1¾") pneumatic glue gun for industrial use. Reduces operator fatigue, speed loader to save time and power-on light. 7 bar (100psi) 14 l/min (0.5 cfm) air supply required.

Melt rate	5.0 kg (11lbs)/hr
Glue size	43mm (1¾") glue cartridge
Voltage	120V and 230V
Wattage	1000W
Heater	Cartridge
Temp Control	Interchangeable thermostat (Contact distributor)
Hotmelt gun °C (°F)	195°C (380°F)
Lowmelt gun °C (°F)	130°C (265°F)
Power cable	3m (10 ft)
Weight	2.3kg (5lbs)
Packaging	Plain box (5 per ctn)

43mm (1¾") tec glue guns & tecbond glue cartridges

Eco-friendly & efficient

New plug-in modules allow the gun to be set to different temperatures from 130°C - 215°C for max bond strength

tec
3400

High output, electronically-controlled 43mm (1¾") glue gun for industrial use. A powerful tool featuring patented ECOTEC® technology for exceptional temperature precision with eco-friendly phased standby operation.

Melt rate	3.8kg (8½lbs+)/hr
Glue size	43mm (1¾") glue cartridge
Voltage	120V and 230V
Wattage	400W
Heater	Cartridge
Temp Control	Electronic plug-in temperature modules
Hotmelt gun °C (°F)	195°C (380°F) fitted, Lowmelt 130°C (265°F), 160°C (320°F) and 215°C (420°F) modules included (additional modules available)
Lowmelt gun °C (°F)	Covered above
Power cable	3m (10 ft)
Weight	1.15kg (2½lbs)
Packaging	Plain box (5 per ctn)

Features an automatic stand-by system that takes the temperature down in stages, protecting the gun from damage and saving energy. Stand-by is deactivated when the trigger is pulled



Full length trigger that allows highly accurate control of the gun's adhesive flow

A new, clever trigger-boost system recognises when the gun's trigger is used continuously and increases the power to the heater in response, upping the output even more



Learn more about the tec 3400! Scan for video



Unsure?



Unsure which adhesive formulation is the best match for your application? Just give our sales team a call - they'll be happy to advise you. Find our contact details on the back page.

tecbond 43mm (1¾") adhesive

Formulation	Description	Colour	Open time	Viscosity
14	High delivery, very fast setting packaging adhesive	Pale amber	Short	Low
1942	Product assembly adhesive for wood and many plastics, nylon, ABS & rigid PVC	Amber	Long	Medium
1X	Low viscosity, wood working and packaging adhesive. Medium open time	Light brown	Medium	Low
213	Economical, general purpose adhesive. Suitable for ceramics, rigid PVC & polystyrene	Pale amber	Long	High
214	Economical, fast setting, packaging adhesive	Pale amber	Short	Medium
23	Medium viscosity multi-purpose adhesive. For fabric, hard & soft wood & many plastics	Pale amber	Long	Medium
232	Economical, high viscosity, clear general purpose adhesive. Suitable for fabrics, wood, card, and some plastics	Clear	Medium	High
240	Multi-temp, long open time, multi-purpose, clear adhesive. For use with many plastics & light gauge metals	Clear & colours	Long	Medium
248	Very high performance, acrylic based hotmelt. Excellent adhesion to smooth and shiny surfaces	Clear	Long	Medium
260	High performance, long open time, tough, flexible adhesive. Suitable for ceramics, plastics & woods	Light brown	Long	Medium
261	High performance, tough, flexible adhesive with long open time. For use with ceramics, plastics incl PP/PE & woods	Pale amber	Long	Low
265	Long open time product assembly adhesive for smooth & shiny surfaces & many plastics	Amber	Long	Medium
267	High & low heat resistant, medium open time, product assembly adhesive for polypropylene, wood & metals	Pale amber	Long	Low
342	High viscosity, fast setting, white adhesive with instant grab. Suitable for heavy duty carton board & cable attachment	White	Very short	High
5	High delivery, low viscosity, long open time, product assembly adhesive. For wood, plastic & metals	Light brown	Long	Low
LM44	Lowmelt, fast setting, high performance, white adhesive. Ideal for expanded polystyrene, thin films & balloons	White	Short	Low
Polyamide adhesive				
7718FR	Low viscosity fire retardant polyamide for potting and encapsulating applications in the electronics industry	Amber	Short	Low
7784	High performance polyamide for bonding to difficult surfaces. Excellent high and low temperature resistance and good chemical resistance	Amber	Medium	Medium
7785	Very high temperature and chemical resistance, suitable for demanding filter and automotive applications	Amber	Medium	Medium

Did you know? Over 90% of our products are manufactured in the UK.

Could spraytec adhesives work for you?



Learn more!
Scan for video



Don't forget!



We've got optional spray nozzles available on page 18. You can adjust your spray pattern to suit your application instantly!

Tackle sensitive materials

Spray application provides a wider area of adhesion, improving bond strength on weaker substrates when compared with bead application. Thermal damage to temperature sensitive materials is prevented, as the specially formulated adhesive quickly cools when sprayed, but still retains its surface tack.

Clean & efficient

Spray glue is more accurate than aerosols, and gives faster instant grab than solvent based spray adhesives. Did we also mention that it contains no solvent, so it's completely non-hazardous? Best of all, you only pay for the adhesive that you use, as there is no solvent to evaporate. There are no waste cans to dispose of, and the spray isn't airborne – so there's no need for protective masks or overalls, and you won't be left cleaning up excess glue from your work environment. Unused adhesive left in the tool at the end of the job simply re-melts when the tool is next switched on and can continue to be used in the normal way.

Easy to store

Unlike solvent and water-based spray adhesives, spraytec has an indefinite shelf life and does not require any special packaging, transportation, or storage.

Ideal for... heat sensitive materials & applications requiring a wide area of coverage



Carpet backing

Faster & more efficient than most other systems, spraytec 420 is suitable for carpet backing, particularly felt backed carpets, which have proved difficult for many other types of adhesive.



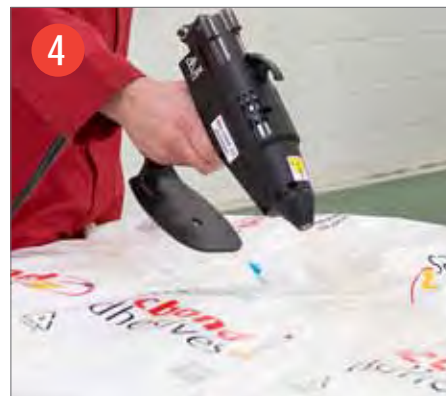
Sensitive materials

Bond polystyrene, foam, bubble wrap and other temperature sensitive materials to wood, cardboard and many other substrates.



Mattress assembly

Spraytec 420 is ideal for manufacturing mattresses. The instant grab allows the soft top to be placed accurately & firmly. There are no solvent smells or water vapour to encourage mould.



Pallet stabilisation

Spraytec 410 can be used for improving load stability & safety. Stretch & shrink wrapping can be reduced, and the adhesive is easily removable and non-destructive.

43mm (1¾") spraytec glue guns & spray adhesives

Don't forget!



You'll need to use an air compressor with the tec 6300 & tec 7300. You can find the **tec-AIR 50TDC** on page 22.

Speedloader holds 3 extra slugs of glue!

tec
6300



tec
7300



Extremely robust 43mm (1¾") spray glue gun with power-on light. Designed for industrial use, it sprays hotmelt at any angle with adjustable spray pattern. A non-toxic adhesive spray system, it covers large areas and applies hotmelt to heat sensitive substrates without damage. 7 bar (100psi) 85 l/min (3 cfm) air supply required.

Extremely robust, 43mm (1¾") spray glue gun. Non-toxic adhesive spray system, sprays hotmelt at any angle, adjustable spray pattern to cover large areas. Apply hotmelt to heat sensitive substrates without damage. Speed loader to reduce downtime, plus power-on light. 7 bar (100psi) 85 l/min (3 cfm) air supply required.

Melt rate	4.2kg (10lbs)/hr
Glue size	43mm (1¾") glue cartridge
Voltage	120V and 230V
Wattage	500W
Heater	Cartridge
Temp Control	Interchangeable thermostat
Hotmelt gun °C (°F)	180°C (350°F)
Lowmelt gun °C (°F)	n/a
Power cable	3m (10 ft)
Weight	1.4kg (3lbs)
Packaging	Plain box (5 per ctn)

Melt rate	5.25kg (11½lbs)/hr
Glue size	43mm (1¾") glue cartridge
Voltage	120V and 230V
Wattage	1000W
Heater	Cartridge
Temp Control	Interchangeable thermostat (Contact distributor)
Hotmelt gun °C (°F)	180°C (350°F)
Lowmelt gun °C (°F)	n/a
Power cable	3m (10 ft)
Weight	2.3kg (5lbs)
Packaging	Plain box (5 per ctn)

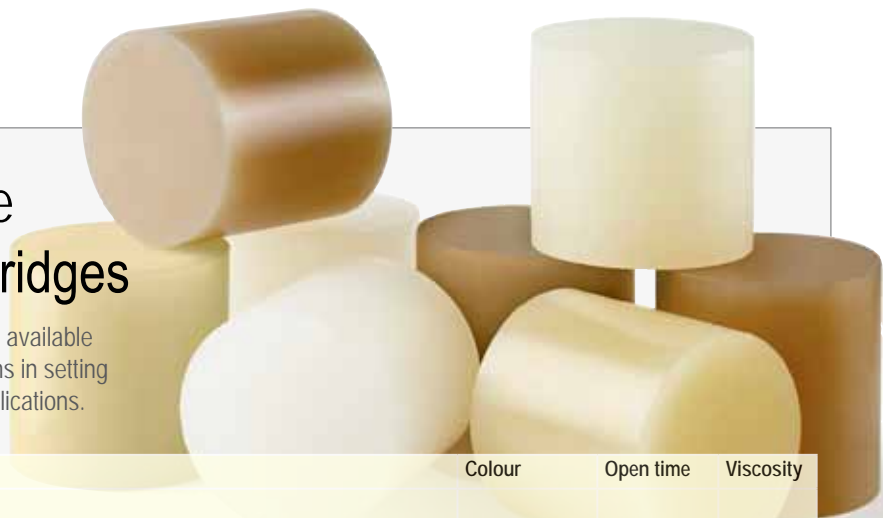
F.Y.I



Adhesive test packs available - call us for details. You can find our contact details on the back page.

Spraytec high performance 43mm (1¾") adhesive cartridges

Specially designed for use in the tec 6300 & tec 7300, and available to bond virtually any material. The range provides variations in setting time, colour, heat resistance and viscosity to suit most applications.



Formulation	Description	Colour	Open time	Viscosity
spraytec 410	Pallet stabilisation spray adhesive, also for expanded polystyrene	Off white	Up to 1 min	Medium
spraytec 420	General purpose spray adhesive. Suitable for fabric, upholstery foams, bubble film etc	Off white	Up to 3 mins	Medium
spraytec 425	High delivery, high performance, spray adhesive for wood, many plastics and pre-cast concrete moulds	Dark amber	Up to 3 mins	Low
spraytec 430	High performance, long open time spray adhesive. Suitable for polypropylene, foams, wood and cardboard	Amber	Up to 6 mins	Medium

Did you know? Over 90% of our products are manufactured in the UK.



Introducing tecbond bulk hot melts



tecbond bulk packaging adhesives

Formulation	Description	Colour	Open time	Viscosity
7731F-BK	High speed packaging adhesive, very versatile, easy set-up, class leading pot stability for clear running and reduced/eliminated nozzle blockages	Water white	Very short	Low

! *Don't forget!*
We have too many other packaging formulations to list, but if you require a formulation with wider heat and low temperature resistance, for varnished and other difficult surfaces, deep freeze, microwave and low string sift proofing applications, we can help. Please contact us to discuss your application.

tecbond bulk product assembly adhesives


Formulation	Description	Colour	Open time	Viscosity
2626-BK	Specially developed for filter pleating for air filter applications. Very low odour, class leading tank stability for clean running	Water white	Very short	Low
271-PL	Developed specifically to bond polyethylene and polypropylene as well as most other plastics, non wovens, and fabrics. Has a good level of both heat and cold resistance	Light brown	Very long	Medium
272-PL	High performance adhesive formulated for product assembly applications that require good high and low temperature resistance, suitable for most plastics	White	Long	Medium
273-PL	Very high performance product assembly adhesive with good adhesion to ceramics, metals, glass and most plastics including polypropylene	Brown	Long	Low

Packaging

Cost is always important when it comes to packaging, but the use of coated boards, hot fill, deep freeze requirements and microwave suitability mean that packaging hot melts sometimes need to be very technical. It's important to use the right adhesive, and sometimes a higher cost hot melt gives a better mileage - producing better value for money and working out less expensive overall. Understanding how to get this balance right is something we do very well, with a wide range of packaging hot melts on offer to make sure your packaging line is running as quickly and reliably as possible.

Product assembly

Tecbond product assembly bulk hot melts are suitable for applications in numerous industries, including foundry, pre-cast concrete, automotive, woodworking, mattress, filter, and product assembly. These high-performance adhesives offer a range of solutions, covering extremes of temperature whilst bonding many difficult substrates such as polypropylene and polyethylene.

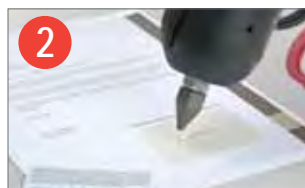
 Unsure which adhesive formulation is best for your application? Our sales team can help - find our details on the back page.

tecbond pressure-sensitive adhesives... for applications that require unlimited open time

Formulation	Description	Colour	Open time	Viscosity
801-PL	Clear, peelable, stain free hot melt for credit cards, magazine tip-ins	Clear	Permanent	Low
901-PL	Pressure sensitive adhesive exhibiting very high levels of tack and adhesion. The low viscosity is particularly suitable for application via spray	Clear	Permanent	Low
902-PL	Very tough, pressure sensitive adhesive exhibiting very high levels of tack and adhesion. The low viscosity is particularly suitable for application via spray	Brown	Permanent	Medium



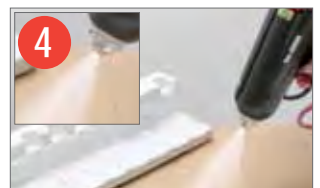
1
Card & branding
Can be easily removed without residue or damage.



2
Temporary bonds
Ideal for fixing cards to letters which can easily be peeled off.



3
Giveaways
Perfect for attaching products to magazines for giveaways.



4
Spray application
For maximum coverage when used with the tec 4500S.

tec pneumatic reservoir glue guns & workstation

Bead or spray gun...

for bulk or shaped hot melts!



tec 4500B
Bead gun



tec 4500S
Spray gun



For slats, granules,
pillows & slugs

tec
4500
guns

Reliable, easy to use glue gun with a built-in melt chamber that allows the use of adhesives in granular form, pillows, or 43mm (1 3/4") slugs. Available in bead (4500B) or spray (4500S) models. 6 bar (90psi) air supply required.

Melt rate	Granular: 1kg (2lbs) - Slugs: 2.5 kg (5 1/2 lbs)/hr
Glue size	Pillows, granules & 43mm (1 3/4") glue cartridge
Voltage	220 - 240V (110 - 120V)
Wattage	600W
Heater	Cartridge
Temp Control	Preset thermostat
Hotmelt gun °C (°F)	180 - 190°C (350-370°F)
Lowmelt gun °C (°F)	n/a
Power cable	3m (10 ft)
Weight	4500B: 1.25kg (2.7lbs) 4500S: 1.45kg (3.2lbs)
Packaging	Plain box (1 per ctn)

Don't forget!
Your silent air compressor, see page 22!



One-handed twist action lock for quick & easy loading of glue tank

Innovative melt chamber allows tec 4500 guns to take both bulk and shaped adhesives

Detachable stand

Don't forget!
For best results, use spray glue with the tec 4500S - see page 15! Adhesive test packs are available.



Learn more!
Scan for video



Why not add a work station?

The new tec 4500 workstation converts your tec 4500B & tec 4500S glue guns to a statically mounted, foot operated glue station. Easy to set up, it allows the operator to have both hands free for gluing applications, improving productivity significantly.

The tec4000-TK (Timer Control) enables a controlled amount of adhesive to be applied. This improves quality, guarantees consistent bonding and reduces the amount of adhesive used. Can only be used in conjunction with the bench mount kit & workstation.



Learn more!
Scan for video



new



! Please note:
Timer unit is sold separately!

Reduce fatigue
and up output!

Reference	Description	tec 305	gastec 600	tec 805	b-tec 807	tec 810	tec 820	tec 3150	tec 3400	tec 4500B	tec 4500S	tec 6100	tec 6300	tec 7100	tec 7300
tec 4500 workstation	Workstation & foot pedal	-	-	-	-	-	-	-	-	■	■	-	-	-	-
TEC4000-TK	Timer Control	-	-	-	-	-	-	-	-	■	■	■	-	■	-

Did you know? Over 90% of our products are manufactured in the UK.

Nozzles

A wide variety of nozzles are available for specialised purposes and to speed up adhesive application. These include multi-hole, extension, spreader and special nozzles for carton closing.

! Standard fitted nozzles are shown in green. ■
Optional nozzles are shown in red. ■
Do not fit or change nozzles unless the gun is hot!



Reference	Type	Description	Valve type	Material	tec 305	gastec 600	tec 805	tec 806	b-tec 807	tec 810	tec 820	tec 3150	tec 3400	tec 6100	tec 6300	tec 7100	tec 7300
					■	■	■	■	■	■	■	■	■	■	■	■	■
ADJ010	Standard Ext Nozzle	2mm (0.080") orifice, 12mm (1/2") extension	BS	AL	■	■	■	■	■	■	■	■	■	■	■	■	■
MDJ016	Standard Ext Nozzle	2mm (0.080") orifice, 12mm (1/2") extension	O	AL	■	■	■	■	■	■	■	■	■	■	■	■	■
MDJ017	Slotted Spreader Nozzle	Allows a 12mm (1/2") wide spread of glue	O	AL	■	■	■	■	■	■	■	■	■	■	■	■	■
MDJ018	Precision Nozzle	1.25mm (0.050") orifice, 5mm (1/4") extension	O	AL	■	■	■	■	■	■	■	■	■	■	■	■	■
MDJ019	Spreader Extension Nozzle	5mm (3/16") orifice, 12mm (1/2") extension	O	AL	■	■	■	■	■	■	■	■	■	■	■	■	■
MDJ021	Extension Nozzle	2mm (0.080") orifice, 19mm (3/4") extension	BS	AL	■	■	■	■	■	■	■	■	■	■	■	■	■
SK-600-Nozzle	Nozzle and Shroud Kit	2mm (0.080") orifice, 12mm (1/2") extension	BS	AL	■	■	■	■	■	■	■	■	■	■	■	■	■
ANZ016	Standard Nozzle with Aluminium cap	2mm (0.080") orifice	BS	ST	■	■	■	■	■	■	■	■	■	■	■	■	■
ADJ023	Standard nozzle with aluminium cap	3.5mm (0.138") orifice	BS	ST	■	■	■	■	■	■	■	■	■	■	■	■	■
MDC021	Wear resistant steel nozzle cap for ADJ023	3.5mm (0.138") orifice	-	-	■	■	■	■	■	■	■	■	■	■	■	■	■
ADJ012	Spreader Extension Nozzle	6mm (1/4") wide flat orifice, 30mm (1 1/4") extension	BS	ST	■	■	■	■	■	■	■	■	■	■	■	■	■
ADJ013	Angled Extension Nozzle	3mm (0.120") orifice, 30mm (1 1/4") extension	BS	ST	■	■	■	■	■	■	■	■	■	■	■	■	■
ADJ014	Precision Extension Nozzle	1.25mm (0.050") orifice, 30mm (1 1/4") extension	BS	ST	■	■	■	■	■	■	■	■	■	■	■	■	■
ADJ015	2 Hole Nozzle	2 parallel adhesive lines 10mm (0.4") apart	BS	ST	■	■	■	■	■	■	■	■	■	■	■	■	■
ADJ016	3 Hole Nozzle	3 parallel adhesive lines 5mm (1/4") apart	BS	ST	■	■	■	■	■	■	■	■	■	■	■	■	■
ADJ017	'L' Nozzle	Fast full overlap carton sealing	BS	ST	■	■	■	■	■	■	■	■	■	■	■	■	■
ADJ018	'T' Nozzle	Fast centre flap carton sealing	BS	ST	■	■	■	■	■	■	■	■	■	■	■	■	■

Table keychart

BS: Ball and Seat O: Oiler
AL: Aluminium ST: Steel

Spray nozzles Available to fit tec 6300 & tec 7300



Each spray nozzle includes these parts

Reference	Type	Description	tec 305	gastec 600	tec 805	tec 806	b-tec 807	tec 810	tec 820	tec 3150	tec 3400	tec 6100	tec 6300	tec 7100	tec 7300
			■	■	■	■	■	■	■	■	■	■	■	■	■
PA6045	Narrow angle spray nozzle	1.2mm (0.050") orifice (Red)	■	■	■	■	■	■	■	■	■	■	■	■	■
PA6046	Narrow angle spray nozzle	1.5mm (0.060") orifice (Red)	■	■	■	■	■	■	■	■	■	■	■	■	■
PA6056	Narrow angle spray nozzle	2.0mm (0.080") orifice (Red)	■	■	■	■	■	■	■	■	■	■	■	■	■
PA6060	Medium angle spray nozzle	2.0mm (0.080") orifice (Yellow)	■	■	■	■	■	■	■	■	■	■	■	■	■
PA6061	Medium angle spray nozzle	1.5mm (0.060") orifice (Yellow)	■	■	■	■	■	■	■	■	■	■	■	■	■
PA6064	Wide angle spray nozzle	2.0mm (0.080") orifice (Blue)	■	■	■	■	■	■	■	■	■	■	■	■	■

Strong & non-toxic

Tecbond adhesives will not have an adverse chemical effect on the substrates or the contents being packed, unlike solvent based adhesives which could damage expensive or delicate contents. Hot melts will give you a very strong tamper-proof seal that adds extra security to your packaging, as well as improving the rigidity of the carton. Plus, by using tecbond hot melts, you won't obscure any graphics that could be printed on the outside of the carton, as can often happen when using other closing systems such as tape or staples.

Fast, clean bonds

With almost instant setting speeds, tecbond hot melts offer fast, clean bonding on a range of substrates with no messy residue once cooled.

Speciality nozzles available

Extension, multi-hole, and spray nozzles are available to help you optimise your tec glue guns and tecbond glue for packaging. We particularly recommend the ADJ017 and ADJ018 nozzles that have been developed specifically for fast and efficient carton closing.



Consider switching your tape and stretch film for a glue gun and hot melt adhesives when it comes to packaging - they're stronger, faster, cleaner & non-destructive.



Ideal for... saving time and money on packaging applications



POS displays
Tecbond 265 or 261 are able to bond most varnish and coated boards used in point of sale displays, having been specially formulated to bond difficult substrates.



Packaging
For fast closing of cartons, tray assembly, and wrap-around packaging, tecbond 14 or 214 provide the ideal solution. See also ADJ017 & ADJ018 nozzles for carton closing.



Protective foams
Attaching protective foams and similar materials to the inside of cardboard or wooden cases is made easy and fast using tecbond hotmelt or spraytec adhesive.



Sensitive materials
Spraytec adhesive is ideal for attaching heat-sensitive substrates such as polystyrene, and for achieving wide coverage, making it ideal for pallet stabilisation. See page 15 for details.

Woodworking with hot melt adhesives

The tec 805-15, 806-12, b-tec 807, tec 820, tec 3400 and tec 6100 are all good options for woodworking

Still using traditional fastenings?

Did you know that hot melts are faster to apply, create a stronger, cleaner bond, are more efficient and less destructive than cold glue, tape, and staples?

Not just for bonding

Even though we're very good at it. But with such a comprehensive range of tecbond glues on offer, we've got both bonding and wood filling covered. So not only can you assemble things like V-grooves and templates, attach corner blocks and reinforcing cleats to furniture, and even add some decorative mouldings here and there, you can also use tecbond glues to repair knot damage and scratches to wooden surfaces.

Additional tools

There's the Mouseplane® (page 23) to help you trim away wood and dried glue, and extension nozzles are available for filling tricky gaps and voids (see page 18 or call our sales team to find out about more options). If you want a tool that can cope with bonding and wood filling, we'd recommend the tec 820. The adjustable temperature means that it can be turned down to around 160°C-180°C for wood filling (the lower temperature draws less moisture out of the wood), and turned up to around 195°C for bonding wood, as this gives better bond strength. See page 4, or page 11, for more information.



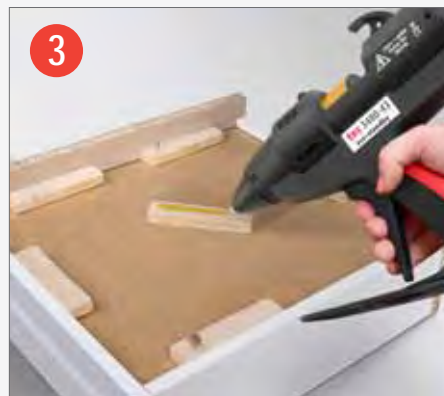
For more information on how tec & tecbond products can help with your woodworking applications, call our sales team. You can find our contact details on the back page.

Ideal for... a range of bonding & wood-filling applications



Knot filling

Fast and effective repair of knot defects, scratches and other forms of deep wood damage. We'd recommend using the tec 305, or the tec 820 with the temp adjusted to 160°C - 180°C.



Reinforcing

Fasten corner blocks, secure reinforcing cleats to drawer bottoms and wardrobe & cabinet backings, and make mirror to frame fastening quicker and easier.



Assembly

Bond decorative mouldings onto caskets, assemble V-grooves, build templates quickly and easily.



Flooring

Attach wooden gripper rods to flooring in no time, and complete wooden floor repairs with coloured adhesive filler. Call us for more information.

Thermostats & gun stands

Most hotmelts run at the 'standard' glue gun temperature of 195°C (380°F), but we also offer lowmelts that run at 130°C (265°F) and heat resistant polyamides that run at 215°C (420°F). It is also sometimes useful to run at a lower temperature to prevent heat damage to some materials the adhesive might be applied to. The tools in the table below can have thermostats or modules changed by a competent person to adjust the temperature.



Unsure which thermostat is the best match for your application or adhesive? Just give our sales team a call - they'll be happy to advise you. Find our contact details on the back page.

Don't forget!

Part numbers in green come fitted as standard with the tool.



	Temperature	tec 810 (Thermostat)	tec 820	tec 3150 (Thermostat)	tec 3400 (Plug in Module)	tec 4500B tec 4500S (Thermostat)	tec 6100 (Thermostat)	tec 6300 (Thermostat)	tec 7100 (Thermostat)	tec 7300 (Thermostat)
For Lowmelts	130°C (266°F)	SK-810-T130	Adjustable 130°C - 200°C (265°F - 390°F)	AED057	AED081	Contact distributor	AED015	N/A	Contact distributor	N/A
For Hotmelts	160°C (320°F)	SK-810-T160		N/A	AED082	Contact distributor	N/A	N/A	Contact distributor	N/A
For Hotmelts	180°C (356°F)	SK-810-T180		N/A	AED083	NCN0533	N/A	AED012	Contact distributor	Contact distributor
For Hotmelts	195°C (383°F)	SK-810-T195		AED055	AED084	Contact distributor	AED010	AED010	Contact distributor	N/A
For Hotmelts	205°C (401°F)	N/A		N/A	AED085	Contact distributor	N/A	N/A	N/A	N/A
For Polyamide Hotmelts	215°C (419°F)	SK-810-T215		N/A	AED086	Contact distributor	AED014	N/A	Contact distributor	N/A

Don't forget!

These tools have temperatures which are factory set and **cannot** be changed, so please make sure that you order the correct tool from the outset.



	Temperature	tec 305	tec 805	tec 806	b-tec 807	gas-tec 600
For Lowmelts	130°C (265°F)	tec 305LT	tec 805LT	N/A	N/A	N/A
For Hotmelts	195°C (380°F)	tec 305	tec 805-15	tec 806	b-tec 807	gas-tec 600

Gun stands

Perfect as a more secure base when you're using your glue gun for prolonged periods or, want to remove the integral stand for better access.



FFS003-SPARES

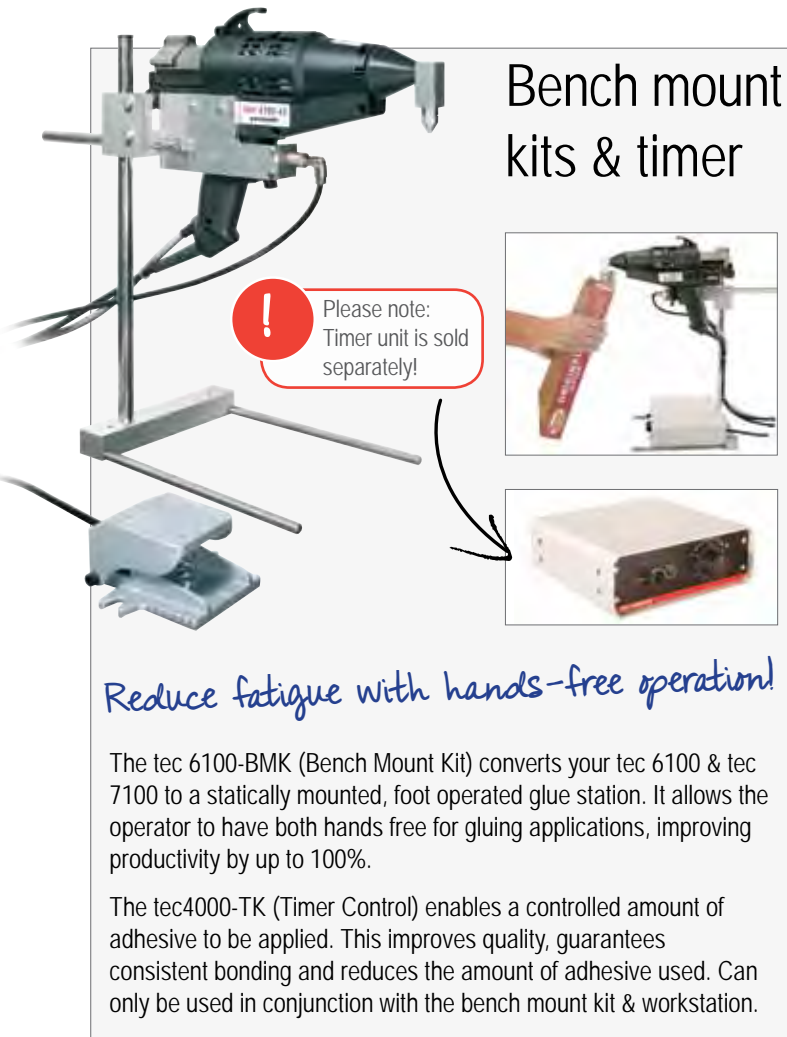
PA3096-SPARES

MDC009

SK-800-MAGSTAND

Reference	Type	Description	tec 305	gas-tec 600	tec 805	tec 806	b-tec 807	tec 810	tec 820	tec 3150	tec 3400	tec 4500B	tec 4500S	tec 6100	tec 6300	tec 7100	tec 7300
FFS003-SPARES	Metal gun stand	For craft/light industrial tools, 300 series	■	-	-	-	-	-	-	-	-	-	-	-	-	-	-
PA3096-SPARES	Metal gun stand	For heavy duty tools, 3000, 6000 & 7000 series (can be wall mounted)	-	-	-	-	-	-	-	■	■	-	-	■	■	■	■
MDC009	Metal gun stand	For 600 & most 800 series tools (can be wall mounted)	-	■	■	■	■	■	■	-	-	-	-	-	-	-	-
SK-800-MAGSTAND	Magnetic gun stand	For most 800 series guns only, smaller stand attaches to metal plate or other metal surfaces	-	-	■	■	-	■	■	-	-	-	-	-	-	-	-

Accessories



Bench mount kits & timer

Please note:
Timer unit is sold separately!

Reduce fatigue with hands-free operation!

The tec 6100-BMK (Bench Mount Kit) converts your tec 6100 & tec 7100 to a statically mounted, foot operated glue station. It allows the operator to have both hands free for gluing applications, improving productivity by up to 100%.

The tec4000-TK (Timer Control) enables a controlled amount of adhesive to be applied. This improves quality, guarantees consistent bonding and reduces the amount of adhesive used. Can only be used in conjunction with the bench mount kit & workstation.

Silent air compressor

TEC-AIR 50TDC

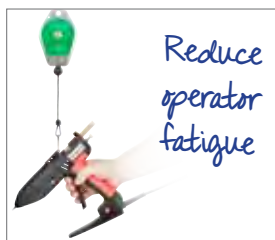


The tec-AIR 50TDC is an almost silent, compact, air compressor. It weighs just 21 kilos (46lbs), and comes complete with a robust tubular carrying frame. It is rated at 50 l/min (2.15cfm) and works to a maximum pressure of 8 bar (120psi). It is capable of operating up to two tec 6100 or tec 7100 applicators or one tec 6300 or tec 7300 spray applicator intermittently for small area coverage. It can also be used with most other pneumatic tools such as staplers, air brushes and tyre inflators.

Maximum pressure	8bar (120psi)
Maximum volume	50 l/min (2.15cfm)
Receiver capacity	3 litres
Voltage	230V
Wattage	340W
Power cable	2m (6½ ft)
Weight	21kgs (46lbs)
Packaging	Plain box (1 per ctn)



Spring balancer



The SB-1200 spring balancer is a tool support system with an easily adjustable tension and a maximum cord length of 1.6 metres (5ft). It minimises operator fatigue, increases productivity and prevents tools from being dropped & damaged.



Pressure regulator



Please note: Fitting not supplied.

This combined pressure regulator, filter and water separator is ideal for use with the tec 6100, tec 6300, tec 7100 & tec 7300 glue guns. It is used to ensure accurate adhesive dispensing and long tool life.

Reference	Description	tec 305	gastec 600	tec 805	tec 806	b-tec 807	tec 810	tec 820	tec 3150	tec 3400	tec 4500B	tec 4500S	tec 6100	tec 6300	tec 7100	tec 7300
TEC6100-BMK	Bench mount kit & foot pedal	-	-	-	-	-	-	-	-	-	-	-	■	-	■	-
TEC4000-TK	Timer Control	-	-	-	-	-	-	-	-	-	■	■	■	-	■	-
TEC-AIR50TDC	Silent air compressor	-	-	-	-	-	-	-	-	-	■	■	■	■	■	■
PA6039	Combined pressure regulator, filter and water separator	-	-	-	-	-	-	-	-	-	■	■	■	■	■	■
SB-1200	Spring balancer for tools up to 1.5kg (3lbs)	■	-	■	■	■	■	■	■	■	-	-	-	-	-	-
SB-3000	Spring balancer for tools from 1.5 up to 3kg (3-6.5lbs)	-	-	-	-	-	-	-	-	-	■	■	■	■	■	■

Mouseplane®

Trim glue lines & wood in no time!



Don't forget!
To order your spare blade!



For the flush trimming of glue lines and wood, the Mouseplane® takes away the need for heavy duty sanding to remove dried glue or to level wood surfaces. It is a most useful tool for carpenters, builders, kitchen fitters and cabinet makers.

It has the comfort and ease-of-use of a plane, combined with the sharpness and speed of a chisel.

Carry case

DDP003-SPARES



Multi-purpose carry-case, can be used with gas-tec 600, tec 305 & most tec 800 series guns. Can also take the tec mat and other accessories.

Carry case

DDP004-SPARES



Multi-purpose carry-case for use with the b-tec 807 glue gun. Can also take the tec mat and other accessories.

Silicone drip mat

TEC MAT



Silicone rubber drip mat protects work surface.
Size 200mm x 200mm x 1.75mm

Refillable gas cartridge x 3

TEC LEC-10



Supplied in packs of three refillable LEC™ cartridges (for use with the gas-tec 600).

Reference	Description	tec 305	gastec 600	tec 805	tec 806	b-tec 807	tec 810	tec 820	tec 3150	tec 3400	tec 4500B	tec 4500S	tec 6100	tec 6300	tec 7100	tec 7300
ADD066-BR1-TEC	Mouseplane for flush trimming of glue lines and wood	■	■	■	■	■	■	■	■	■	■	■	■	■	■	■
SDC005-BR1-TEC	Mouseplane replacement blade	■	■	■	■	■	■	■	■	■	■	■	■	■	■	■
DDP003-SPARES	Multi-purpose carry-case.	■	■	■	■	-	■	■	-	-	-	-	-	-	-	-
DDP004-SPARES	Multi-purpose carry-case	-	-	-	-	■	-	-	-	-	-	-	-	-	-	-
TEC MAT	Silicone rubber drip mat protects work surface. Size 200mm x 200mm x 1.75mm	■	■	■	■	■	■	■	■	■	■	■	■	■	■	■
TEC LEC-10	Refillable cartridges LEC™ (Liquid Energy Cells) x 3	-	■	-	-	-	-	-	-	-	-	-	-	-	-	-



We are a highly motivated, British based, ISO 9001 company. We source our components and raw materials from some of the best companies in the world. Over 90% of our products are manufactured in the UK.



To reduce our impact on the environment our adhesives are often formulated using raw materials that have been harvested from sustainable, managed forests. Our packaging is recyclable and where possible made from recycled materials.



Call us for more information

+44 (0)1789 773232

Techsil Limited

Unit 34 Bidavon Industrial Estate, Waterloo Road
Bidford-on-Avon, Warwickshire, B50 4JN, England
T: +44 (0)1789 773232 F: +44 (0)1789 774239
sales@techsil.co.uk www.techsil.co.uk

tec
glue guns

tecbond
adhesives

